

NOTE - Responsibility is not accepted for errors made by others in scaling from this drawing. All construction information should be taken from figured dimensions only.

F20	TWENTY MINES FIRE RESISTANT WITH SMOKE SEALS AND INTUMESCENT STRIP	FP	PANIC PAD	⊗	NON MAINTAINED EMERGENCY FLOODLIGHTING C/W BATTERY PACK
F30	HALF HOUR FIRE RESISTANT WITH SMOKE SEALS AND INTUMESCENT STRIP	PB	PANIC BAR	S13	FIRE DOOR KEEP SHUT 10mm LETTERS TO BOTH SIDES OF DOOR LEAF
F40	ONE HOUR FIRE RESISTANT WITH SMOKE SEALS AND INTUMESCENT STRIP	SC	SELF CLOSING	S14	FIRE DOOR KEEP LOCKED 10mm LETTERS TO BOTH SIDES OF DOOR LEAF
VP	VISION PANEL	SCA	SELF CLOSING AUTOMATIC RELEASE FUSIBLE LINK	S20	FIRE ESCAPE KEEP CLEAR 10mm LETTERS TO BOTH SIDES OF DOOR LEAF
		FL	FUSIBLE LINK	S22	RUNNING PERSON SYMBOL + ARROW
		D5	DOOR SELECTOR		
		⊗	ILLUMINATED EMERGENCY FITTING WITH RUNNING PERSON SYMBOL + ARROW		

S25	PUSH BAR TO OPEN 20mm LETTERS	⊗	NON MAINTAINED EMERGENCY FLOODLIGHTING C/W BATTERY PACK
S26	DIRECTIONAL ARROW (GREEN)	S13	FIRE DOOR KEEP SHUT 10mm LETTERS TO BOTH SIDES OF DOOR LEAF
FIG	FIRE RESISTING GLAZING ELEMENT TO BS 5266, PART 1	S14	FIRE DOOR KEEP LOCKED 10mm LETTERS TO BOTH SIDES OF DOOR LEAF
SD	AREA COVERED BY SMOKE DETECTOR	S20	FIRE ESCAPE KEEP CLEAR 10mm LETTERS TO BOTH SIDES OF DOOR LEAF
HD	AREA COVERED BY HEAT DETECTOR	S22	RUNNING PERSON SYMBOL + ARROW

□	FIRE ALARM CALL POINT	⊗	9 LITRE WATER FIRE EXTINGUISHER
FAP	FIRE ALARM CONTROL PANEL	⊗	DRY POWDER FIRE EXTINGUISHER
⊗	FIRE ALARM BELL / BOUNDER	⊗	FOAM FIRE EXTINGUISHER
⊗	CARBON DIOXIDE FIRE EXTINGUISHER	⊗	FIRE BLANKET

ALL WALLS AND PARTITIONS TO BE MINIMUM HALF HOUR FIRE RESISTANCE
EMERGENCY LIGHTING TO COMPLY WITH 2005 EDITION OF BS 5266 PART 1.
FIRE SAFETY RELATED SIGNS AND NOTICES TO COMPLY WITH THE HEALTH AND SAFETY (SAFETY SIGN AND SIGNAL) REGULATIONS 2005
FIRE ALARM AND DETECTION SYSTEM TO BE INSTALLED TO BS 5839 PART 1 2002

FIRE FIGHTING EQUIPMENT TO COMPLY WITH BS 5306 WALL AND CEILING LININGS ARE TO BE CLASS 1 SURFACE SPREAD OF FLAME (AS DEFINED BY BS 476 PART 7) IN PUBLIC AREAS AND CLASS 0 IN ESCAPE ROUTES.
UPHOLSTERED SEAT FURNITURE TO SATISFY THE FOLLOWING

• IGNITION SOURCE (CIGARETTE TEST) AS SPECIFIED IN BS 5852 PART 1 FIRE TEST FOR FURNITURE METHODS OF TEST FOR THE IGNABILITY BY SMOKERS.

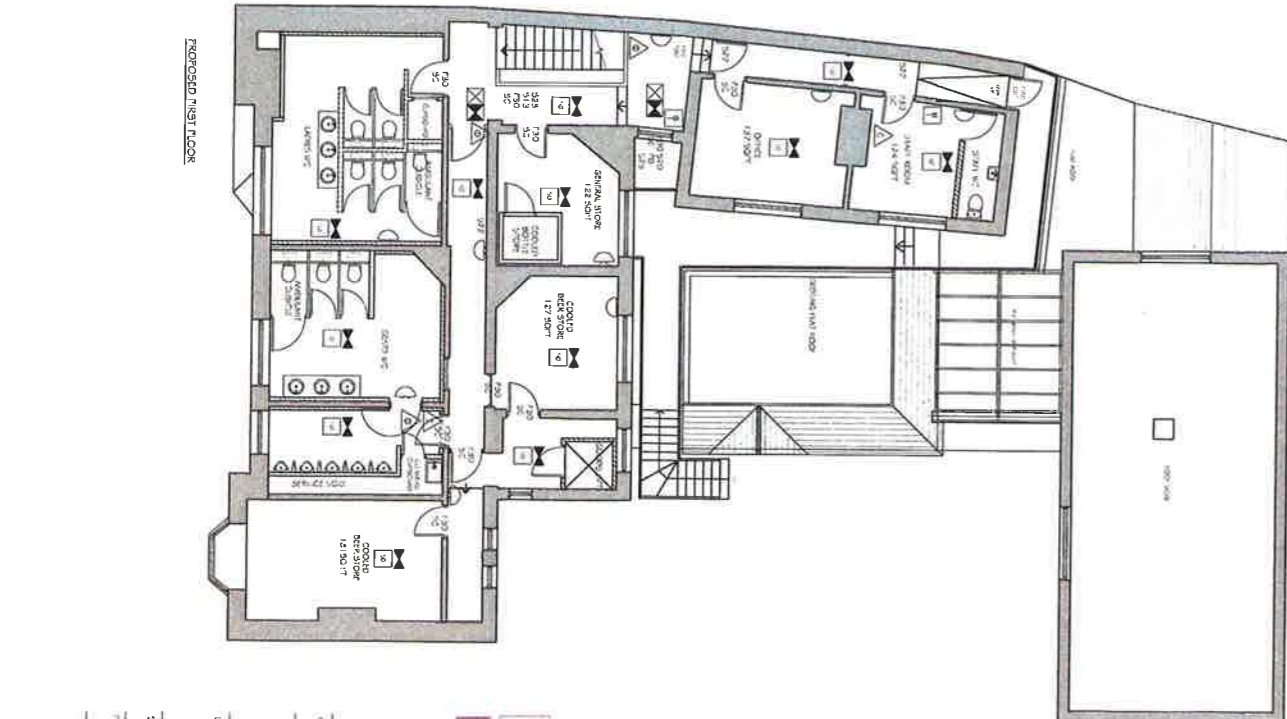
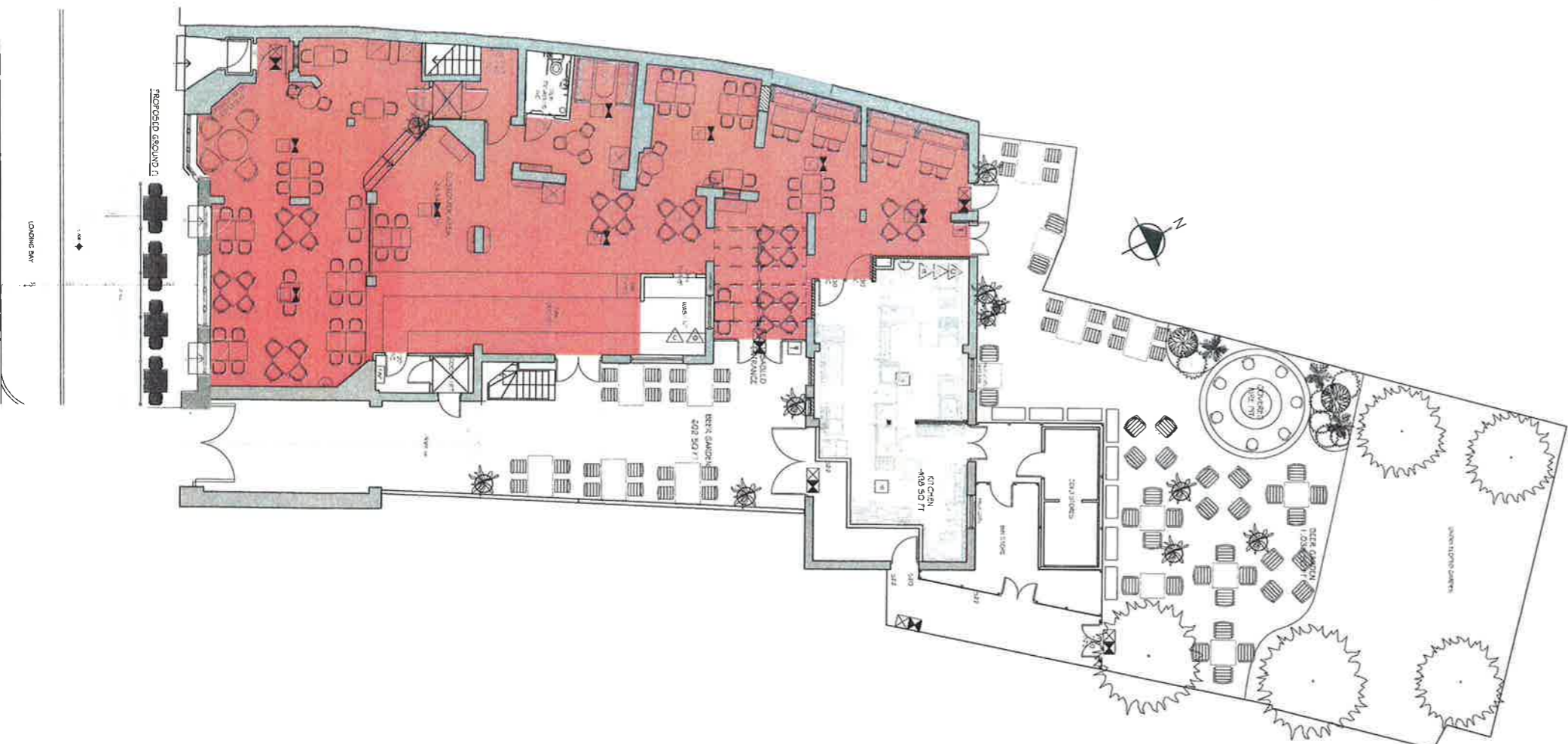
• BS 5852 PART 2 FIRE TEST FOR FURNITURE. METHODS OF TEST FOR THE IGNABILITY OF UPHOLSTERED COMPOSITES FOR TESTING BY FLAMING SOURCE, MINIMUM TEST TO BE CRIB IGNITION SOURCE 5.

FABRICS THAT HAVE HAD A FLAME RETARDANT TREATMENT TO PASS THE WATER SOAK TEST AS DEFINED BY BS 5651 TEST CERTIFICATE TO BE SUBMITTED TO FIRE AUTHORITY.

CURTAINS AND DRAPES TO SATISFY TYPE B PERFORMANCE REQUIREMENTS TO BS 5867 PART 2.

ARTIFICIAL FOLIAGE AND DECORATIVE EFFECTS TO BE FIRE RETARDANT TO THE SATISFACTION OF THE FIRE AUTHORITY.

AREA FOR REGULATED ENTERTAINMENT/ SALE BY RETAIL OF ALCOHOL PROVISION OF LATE NIGHT REFRESHMENT



K d p a i n e & a s s o c i a t e s l t d
 architectural & construction consultants
 project managers interior designers
 1st Floor, 100, Victoria Road, Southampton, SO15 2JG
 T +44 (0)1703 487516 F +44 (0)1703 467520
 e-mail info@kdpa.co.uk

Client: JP WESTERHOORN PLC
 Project: PUB NO. 6638 THE BULL AMESBURY

Drawn: S.H.E. Date: 11/11/10
 Checked: A.S. Date: NOV 2011
 Scale: 1:500

GROUND & FIRST FLOOR LICENSING LAYOUTS